



# **Translational and Transactional Multi-sectoral Engagement with Practitioners and Decision-makers**

October 23, 2020

*Jeanne Herb*

**Edward J. Bloustein School of Planning & Public Policy**

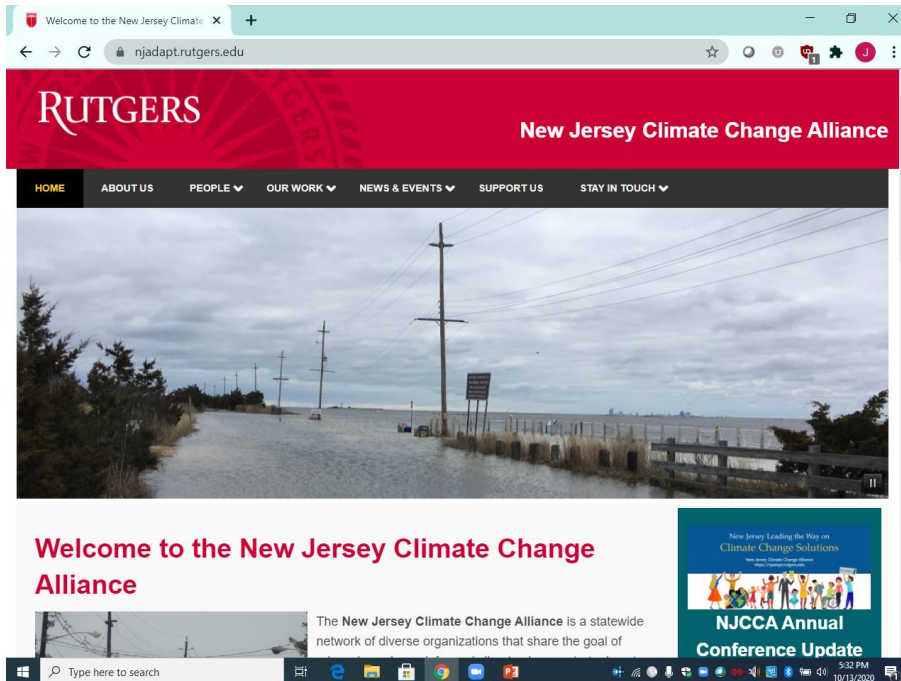
## New Jersey Climate Change Alliance



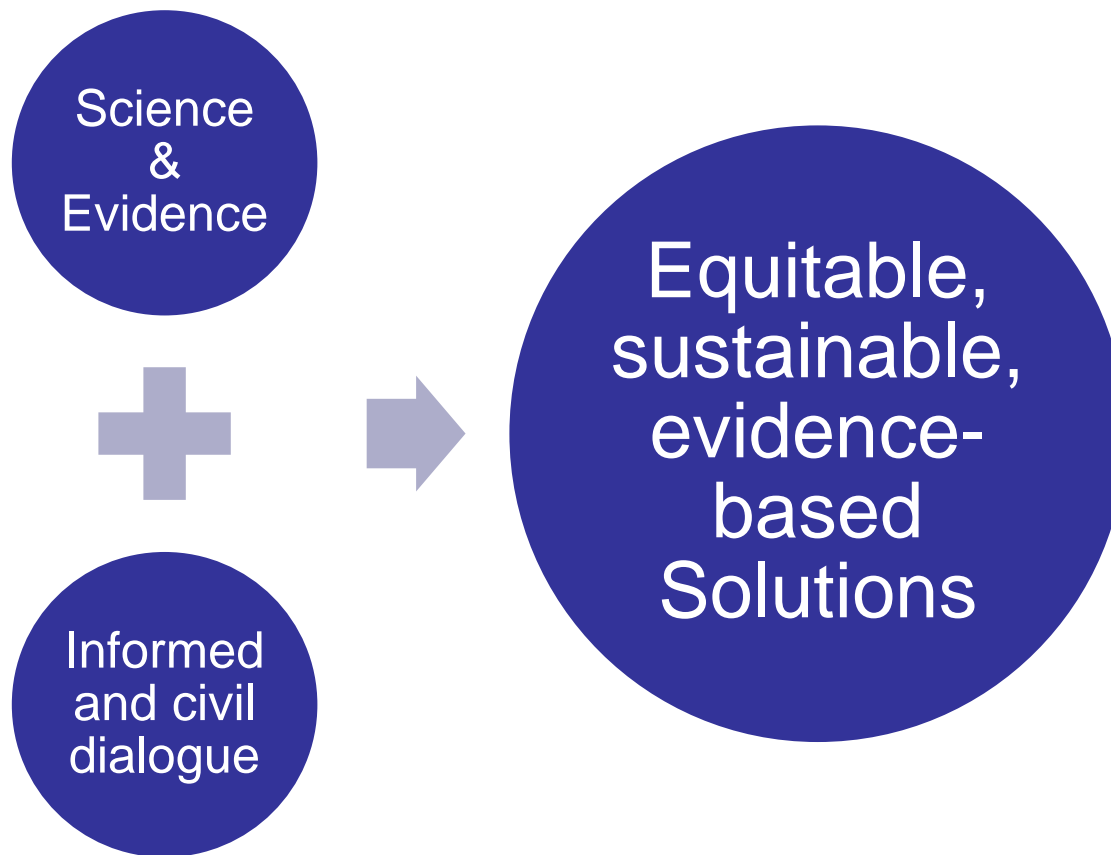
NJ Climate Change Alliance

<https://njadapt.rutgers.edu/>

Network of diverse organizations that share the goal of advancing science-informed climate change strategies at the state and local levels in New Jersey, both with regard to adapting to changing climate conditions and addressing the emissions that cause climate change.



- ✓ 10 years strong!
- ✓ Award winning
- ✓ 60 diverse organizations



# Identify evidence-based policy options

**An Overview of State Coastal Zone Management Policies Designed to Promote Coastal Resilience**  
March 2019

**Protect New Jersey's Water Supply from Climate Change**

**Reducing New Jersey's Greenhouse Gas Emissions**  
A guide to policy options

Thomas H. Kean and James J. Florio

the challenges a changing climate poses to our drinking-water supplies. The reports also offer insights on strategies that New Jersey can adopt to increase the resilience of our water supplies

## Develop actionable tools and information

(to inform planning and decision-making in the public, private, and NGO sectors)



**RUTGERS** Eagleton Institute of Politics **RUTGERS**  
Eagleton Center for Public Interest Polling eagletonpoll.rutgers.edu njadapt.rutgers.edu/ NJ Climate Change Alliance

### CLIMATE CHANGE ATTITUDES IN NEW JERSEY

*A Collaboration: Eagleton Center for Public Interest Polling/Rutgers-Eagleton Poll and New Jersey Climate Change Alliance*

Ashley Koning, PhD, Assistant Research Professor and Director  
Cliff Zukin, PhD, Senior Survey Advisor  
William Young, MA, Research Associate  
Kyle Morgan, MA, Research Assistant

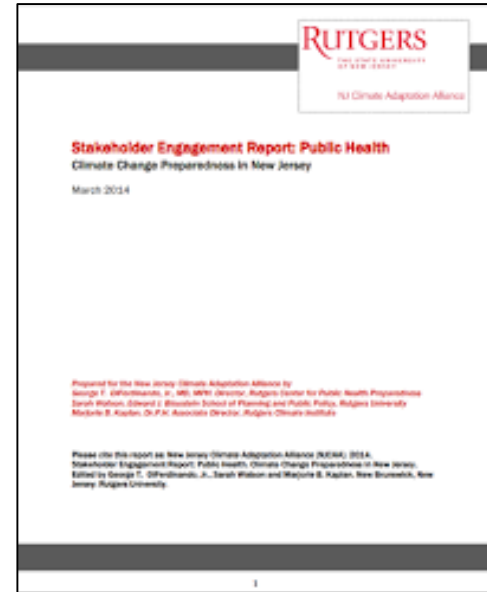
April 2019

# Conduct outreach & education

*(to state and local officials, communities, leaders, and the general public)*



Addressing climate change is a monumental opportunity



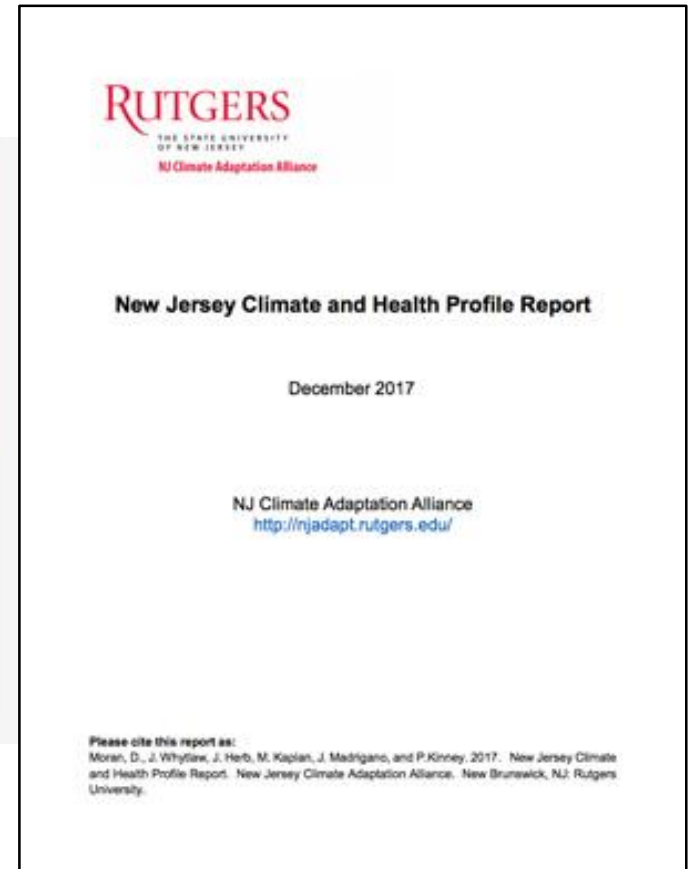
## New Jersey Leading the Way on Climate Change Solutions

New Jersey Climate Change Alliance  
<https://njadapt.rutgers.edu>



# Link scientists, engineers, and other experts to decision-makers, communities, and leaders

*(to inform policy and practice)*



# Create a forum that engages diverse perspectives

*(to advance evidence-based climate strategies and policy)*

## Op-Ed: COVID-19, Racial Injustice and Climate Change Require a Bold Approach, Not Incrementalism

JEANNE HERB, MARJORIE KAPLAN | JULY 14, 2020 | [OPINION](#)

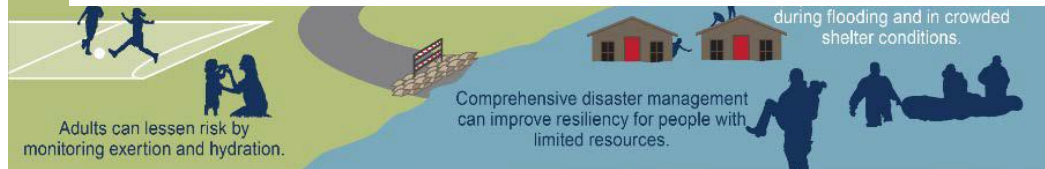
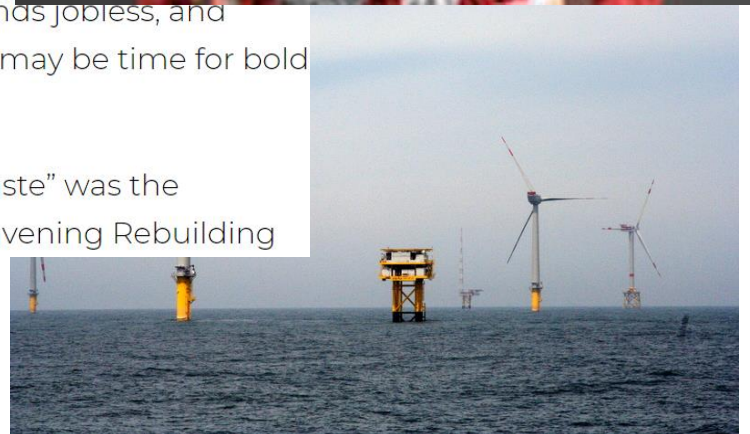
Now is the time to act on advancing a healthy, resilient, sustainable and



Marjorie Kaplan, left, and Jeanne Herb


With a nation rattled by a public health crisis, a deep recession that has left thousands jobless, and growing signs of climate change, it may be time for bold new ideas to address those crises.

“This is too good a crisis to go to waste” was the message of the two-part virtual convening Rebuilding





Science  
&  
EvidenceEquitable,  
sustainable,  
evidence-  
based  
SolutionsInformed  
and civil  
dialogue

- 
- ESSO
- 
- LEARN
- 
- **Building trust is the cornerstone of cross-sector collaborative efforts to advance science-informed, equitable climate solutions;**
  - **Decision-makers, practitioners & stakeholders trust public universities as non-partisan, objective “honest brokers” in addressing complex, science-informed societal challenges;**
  - **Public university support of cross-sector models....takes time and resources, demands internal multidisciplinary collaboration, and builds external relationships for the university;**
  - **Funding for public university support of cross-sector models to advance climate solutions is challenging;**
  - **Internal university champions and senior-level support are critical factors for university success.**



*Thank you*

[jherb@ejb.rutgers.edu](mailto:jherb@ejb.rutgers.edu)  
848-932-2725; 908-752-5455