

# PhotoVoice Study

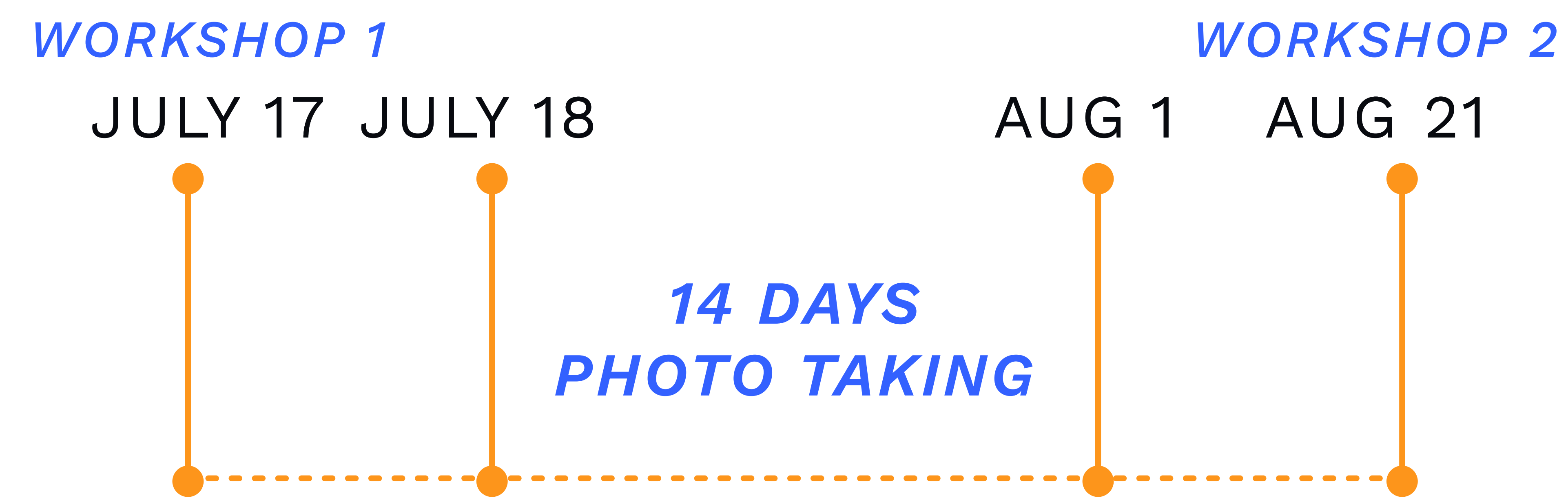
Partners: Rutgers University, GroundWork Elizabeth, HACE  
Team Members: Sunyoung Kim, Phaneendra Sivangula, Gemma Gao



## WHAT IS A PHOTOVOICE STUDY?

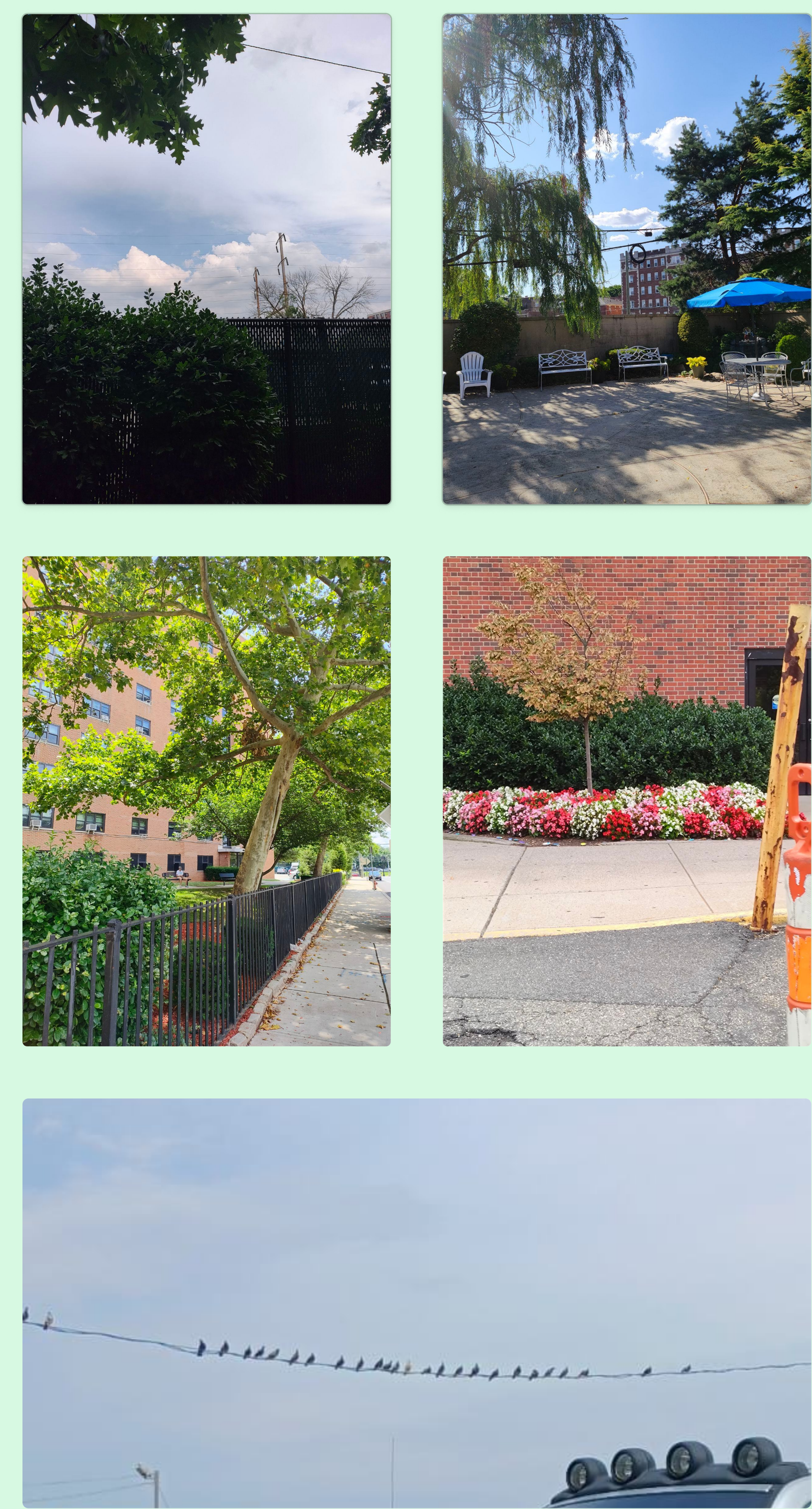
PhotoVoice is a way that a group of people work together, using photography to create a joint story about a community issue or challenge. In our case, to understand the community's perception and experiences about the changes in **air quality** and **heat stress**.

## STUDY TIMELINE

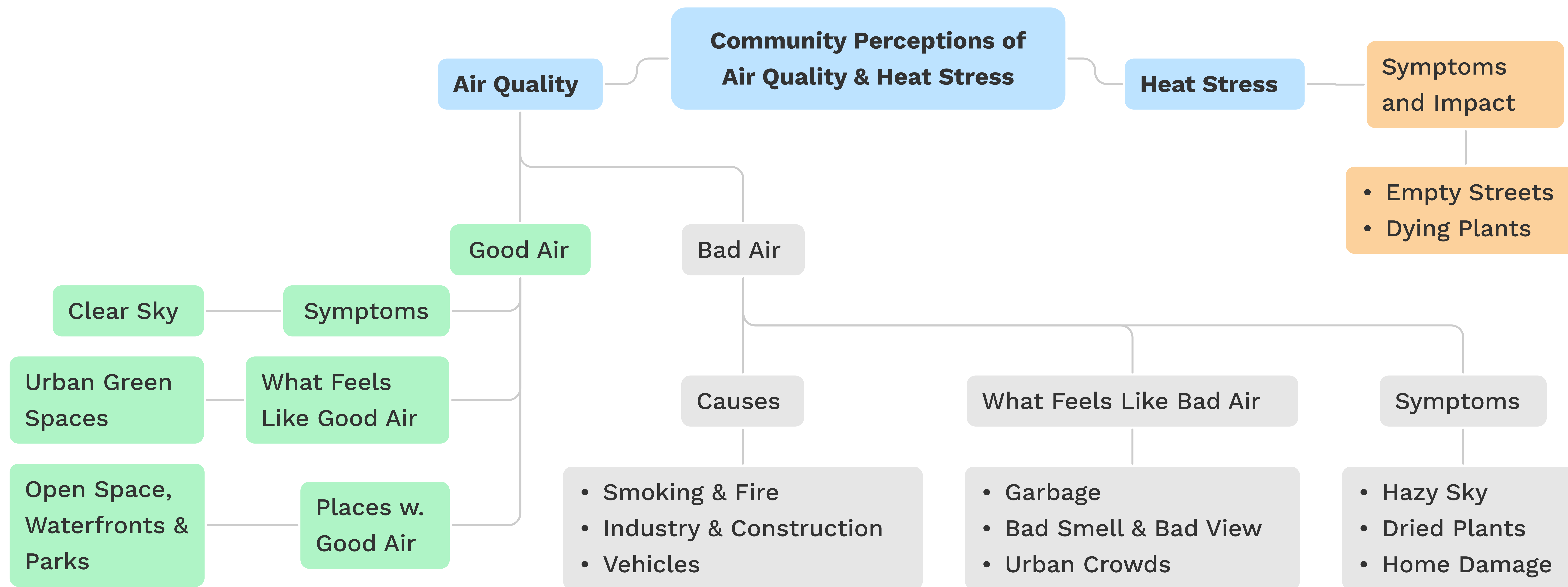


Community Workshop Brings Residents Together

## Good Air Quality



## FINDINGS



## Heat Stress



## Bad Air Quality

