

SCALING BLUE FINANCE FOR SUSTAINABLE OCEAN ECONOMIES IN THE NORTHEAST U.S.: A SYSTEMATIC REVIEW OF GLOBAL MODELS AND REGIONAL APPLICATIONS

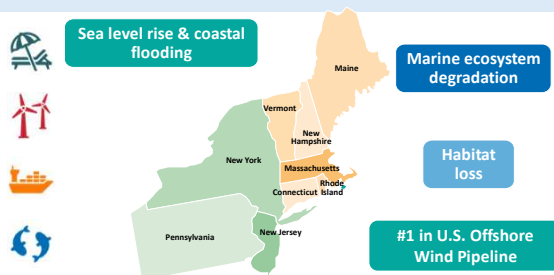
Hilda Afeku-Amenyo¹, Samuel Quansah¹, Pankaj Lal, PhD²
¹Montclair State University, ²Clean Energy and Sustainability Analytics Center (CESAC)

MONTCLAIR
STATE UNIVERSITY

“Blue bonds can catalyze climate-resilient, equitable blue economic growth in the Northeast U.S. if adapted to its multi-level governance and regional priorities.”

ABSTRACT

This study analyzes five global blue bond issuances (Seychelles, NIB, Indonesia, Ecuador, Bank of China) using a 10-criteria framework (e.g., financial structure, governance, environmental impact, scalability). Findings show blue bonds can catalyze investment, public-private partnerships, and measurable ecological outcomes, especially when aligned with nature-based solutions and regional priorities. Recommendations include piloting resilience-linked bonds, standardizing KPIs, and establishing multistate governance to avoid “blue-washing” and ensure equity.



With the Northeast facing \$70B+ in storm damage and leading the U.S. in offshore wind, blue bonds offer a timely financial tool for climate adaptation and economic growth

WHAT ARE BLUE BONDS?

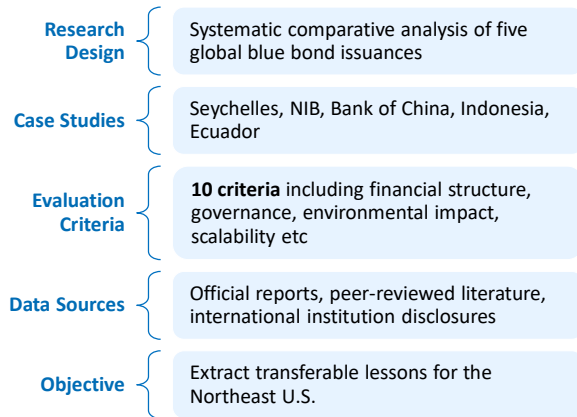
DEFINITION

“Debt instruments issued to raise capital for ocean-friendly projects that promote sustainable marine and coastal development while providing economic returns.” (IFC, 2020)

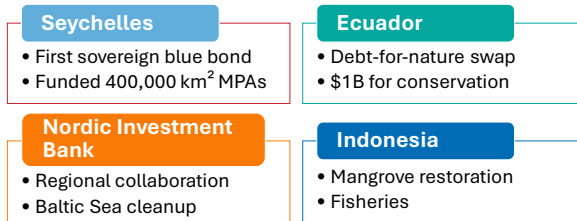
HOW THEY WORK?



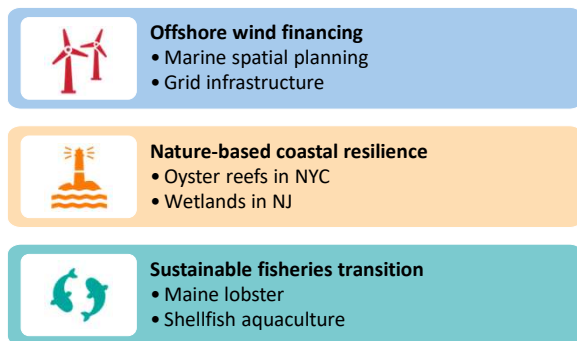
METHODOLOGY



GLOBAL CASE STUDIES



TOP 3 REGIONAL OPPORTUNITIES



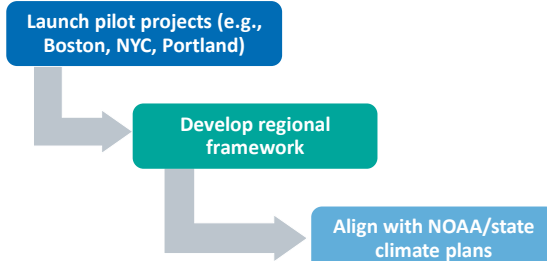
KEY CHALLENGES & SOLUTIONS

CHALLENGES	SOLUTIONS
Fragmented governance (federal/state/local)	Regional blue bond task force
Risk of 'bluewashing'	Standardized KPIs (Coastal Protection Index)
Market immaturity	Blended finance + pilot projects

IMPACT METRICS (REGIONALLY TAILORED)

Coastal Protection Index	Flood risk reduction
Sustainable Fisheries Yield	% sustainably managed
Marine Biodiversity Index	Ecosystem health
Carbon Sequestration (via seagrass/mangroves)	Tons CO ₂ captured

PATH FORWARD



REFERENCES

SCAN HERE FOR REFERENCES



CONTACT

Hilda Afeku-Amenyo
afekuamenyo1@montclair.edu
Samuel Quansah
quansahs1@montclair.edu
Pankaj Lal, PhD
lal@montclair.edu